

TS-1104S Series

SMT Top Actuated Switches



Description

The TS-1104S series SMT top actuated switches are recognized in the home and garden equipment, white goods and metering industries for their responsiveness and reliability. Available in a 6.2 x 6.4mm footprint, in multiple heights and with a ground pin option, the TS-1104S can help any product perform better than the competition.

Features & Benefits

- 6.2 x 6.4 mm footprint
- Multiple heights
- Ground pin option

Applications

- Metering
- White goods
- Home and garden equipment

Specifications

Function	
	Switches in reels of 1,500 or 1000 PC Dimensions of reels according to EIA 481B External diameter 330 m

Mechanical Characteristics

Travel	0.20 mm ±0.15 mm for 160 & 250 gf 0.30 mm ±0.15 mm for 320 gf
Operating Life	200,000 cycles for 160 gf version 100,000 cycles for 250 gf & 320 gf versions
Operating Force	160 gf ±50 gf blue actuator 250 gf ±50 gf red actuator 320 gf ±80 gf black actuator

Electrical Characteristics

Max. Voltage	12 VDC
Max. Current DC	50 mA
Dielectric Strength	250 VA C (1mn)
Contact Resistance	100 mΩ
Insulation Resistance	≥ 100 M Ω
Bounce Time	< 5 ms

Environmental Characteristics

Operating Temperature	-20°C to 85°C
------------------------------	---------------

Process

Soldering	This component is suited to the following methods: Infrared Reflow Soldering in accordance with IEC61760-1
------------------	---

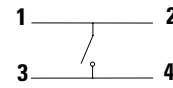
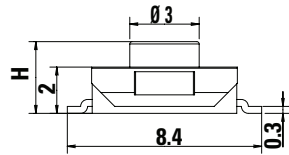
Notes:

Specifications listed above are for switches with standard options. For information on specific and custom switches, consult Customer Service Center. The PTS series is not certified for using in Automotive application and no PPAP. However, in the case of some automotive accessories and specific applications for 2 and 3 wheeled vehicles the PTS is widely used and very suitable. Please contact your local C&K representative to discuss your application and the best switch solution.

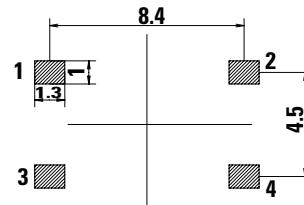
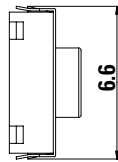
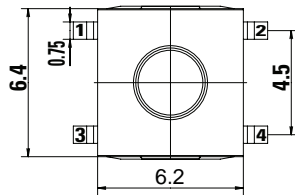
TS-1104S 4P

Dimensions

No Ground Pin H=2.5,3.1,3.4,3.8,4.3,5.0 mm



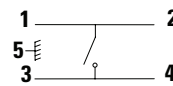
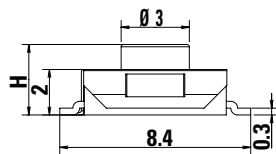
Schematic



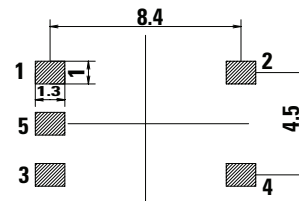
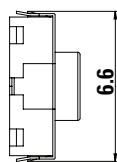
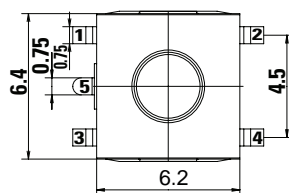
Recommended PCB Layout

TS-1104S 5P

Ground Pin H=2.5,3.1,3.4,3.8,4.3,5.0 mm



Schematic



Recommended PCB Layout